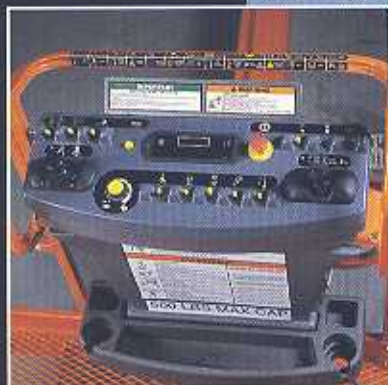


SX Series

TELESCOPIC BOOM LIFTS



Reliable,
Proven Controls



Pin-less Axle Extension
for Faster Setup



Large Operator
Work Station

110SX
110SXJ
120SXJ



JLG

The Proven Winners Keep You Moving Ahead

Continuing a proud tradition, JLG offers the most rugged, reliable telescopic boom lifts in the industry — with the JLG Models 110SX, 110SXJ and 120SXJ. JLG has built on a design that has been proven on the most demanding high-reach applications up to 33.53m (110ft.) and 36.58m (120ft.), respectively. You can count on getting the dependability that keeps business moving, plus valuable standard features such as the new pin-less axle system and the Extend-A-Reach articulating boom section. Updated platform and operator controls (600 series style) deliver improved operating convenience.



110SX & 110SXJ

Rediscover the improved Models 110SX and 110SXJ telescopic boom lifts for applications up to 33.53 m (110 ft.). They're still the standard for multi-function operations on docks, aircraft hangars, construction, industrial or other job sites.

Features & Advantages

- Pin-less axle extension system for faster, more efficient setup
- Standard four-wheel drive
- Controls common with other JLG lifts
- Spacious 2.44 m (8 ft.) platform provides comfortable work area
- Faster lift and lower speeds for improved productivity
- Rugged square steel platform tubing for enhanced durability
- Diesel powered engine options
- Superior boom design for an optimum strength-to-weight ratio
- 110SXJ features a 3.05 m (10 ft.) Extend-A-Reach articulating jib

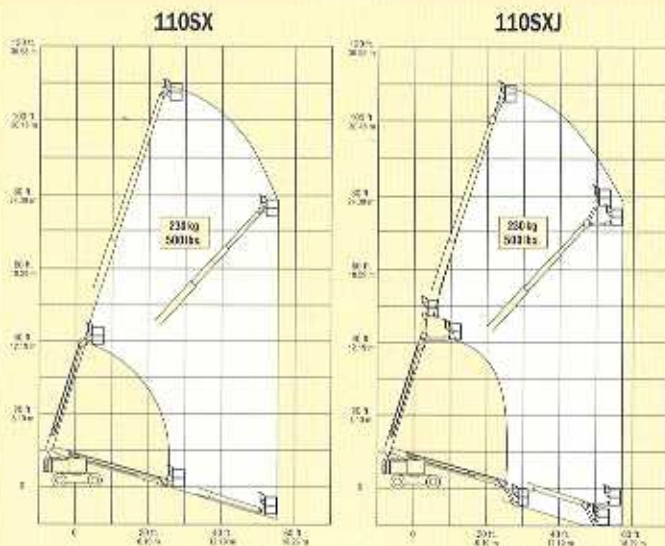
120SXJ

At 36.58 m (120 ft.), the Model 120SXJ offers the highest level of performance within the SX line. It features faster boom movement for improved operator efficiency, standard four-wheel drive with planetary reduction gear, standard four-wheel/crab steering and exclusive Load Management Indicator System with audio/visual alert.

Features & Advantages

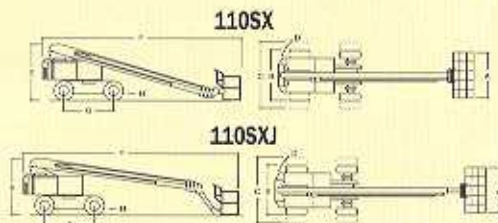
- Standard pin-less axle extension reduces time spent for machine setup
- Improved control layout for faster platform positioning
- Standard 3.35 m (11 ft.) Extend-A-Reach articulating jib for ease of platform positioning around obstacles
- Rugged square steel platform tubing for enhanced durability
- Stowed length of 10.95 m (35 ft. 11 in.) for transport with standard flatbed trailers

JLG MODELS 110SX & 110SXJ



REACH SPECIFICATIONS

| | |
|--------------------------------------|-------------------|
| Platform Height | 33.53 m (110 ft.) |
| Horizontal Outreach | 16.76 m (55 ft.) |
| Below Ground Reach (110SX only) | 3.66 m (12 ft.) |
| Swing | 360° Continuous |
| Platform Capacity-Unrestricted | 230 kg (500 lbs.) |
| Platform Rotator | 180° Hydraulic |
| Jib - Overall Length (110SXJ) | 3.05 m (10 ft.) |
| Jib - Range of Articulation (110SXJ) | 95° (+15°, -80°) |



DIMENSIONAL DATA

| | |
|---------------------------------------|-----------------------------------|
| A. Platform Size | 0.91 x 2.44 m (36 x 96 in.) |
| B. Overall Width - Axles Retracted | 2.49 m (8 ft. 2 in.) |
| C. Overall Width - Axles Extended | 3.30 m (10 ft. 10 in.) |
| D. Tailswing (Axles Extended) | 0.86 m (2 ft. 10 in.) |
| E. Stowed Height | 3.0 m (9 ft. 10 in.) |
| F. Stowed Length (110SX) | 11.76 m (38 ft. 7 in.) |
| (110SXJ) | 13.50 m (44 ft. 4 in.) |
| G. Wheelbase | 3.35 m (11 ft.) |
| H. Ground Clearance | 0.28 m (11 in.) |
| Gross Vehicle Weight* (110SX) | 18,870 kg (41,600 lbs.) |
| (110SXJ) | 18,310 kg (40,400 lbs.) |
| Max. Ground Bearing Pressure (110SX) | 12.4 kg/cm ² (177 psi) |
| Max. Ground Bearing Pressure (110SXJ) | 11.8 kg/cm ² (168 psi) |

CHASSIS

(Standard Two-Wheel Steer)

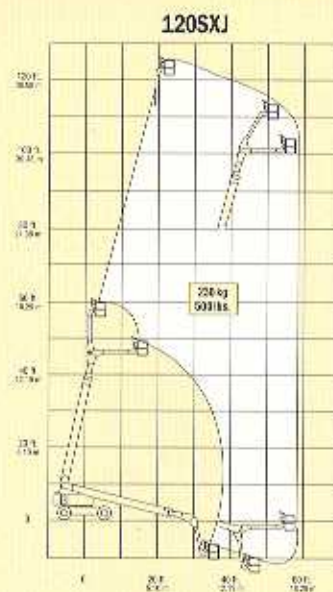
| | |
|--------------------------|-------------------------|
| Drive Speed | 4.8 km/h (3 mph) |
| Gradeability | 40% |
| Turning Radius (Inside) | |
| Axles Retracted | 4.47 m (14 ft. 8 in.) |
| Axles Extended | 3.66 m (12 ft.) |
| Turning Radius (Outside) | |
| Axles Retracted | 6.76 m (22 ft. 2 in.) |
| Axles Extended | 7.32 m (24 ft.) |
| Tyre Size/Type | 385/65R22.5 Foam Filled |

POWER SOURCE

| | |
|---------------------|----------------------------|
| Diesel Engine | Deutz F4L912 52 kW (70 hp) |
| Fuel Tank Capacity | 150 L (33 gal.) |
| Hydraulic Reservoir | 190 L (41 gal.) |
| Auxiliary Power | 12V-DC |

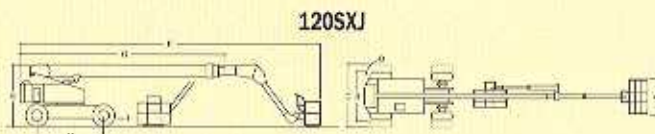
*Certain options or country standards will increase weight

JLG MODEL 120SXJ



REACH SPECIFICATIONS

| | |
|-----------------------------|-------------------|
| Platform Height | 36.58 m (120 ft.) |
| Horizontal Outreach | 16.76 m (55 ft.) |
| Swing | 360° Continuous |
| Platform Capacity | 230 kg (500 lbs.) |
| Platform Rotator | 180° Hydraulic |
| Jib - Overall Length | 3.35 m (11 ft.) |
| Jib - Range of Articulation | 95° (+15°, -80°) |



DIMENSIONAL DATA

| | |
|------------------------------------|-----------------------------------|
| A. Platform Size | 0.91 x 2.44 m (36 x 96 in.) |
| B. Overall Width (Axles Retracted) | 2.49 m (8 ft. 2 in.) |
| C. Overall Width (Axles Extended) | 3.3 m (10 ft. 10 in.) |
| D. Tailswing (Axles Extended) | 0.86 m (2 ft. 10 in.) |
| E. Stowed Height | 3.15 m (10 ft. 4 in.) |
| F. Stowed Length (Working) | 15.95 m (52 ft. 4 in.) |
| G. Stowed Length (Transport) | 10.95 m (35 ft. 11 in.) |
| H. Wheelbase | 3.35 m (11 ft.) |
| I. Ground Clearance | 0.30 m (12 in.) |
| Gross Vehicle Weight* | 19,750 kg (43,500 lbs.) |
| Max. Ground Bearing Pressure | 10.5 kg/cm ² (149 psi) |

CHASSIS

(Standard Four-Wheel Steer)

| | |
|--------------------------|-------------------------|
| Drive Speed | 4.4 km/h (3 mph) |
| Gradeability | 40% |
| Turning Radius (Inside) | |
| Axles Retracted | 3.91 m (12 ft. 10 in.) |
| Axles Extended | 3.23 m (10 ft. 7 in.) |
| Turning Radius (Outside) | |
| Axles Retracted | 5.49 m (18 ft.) |
| Axles Extended | 5.74 m (18 ft. 10 in.) |
| Tyre Size/Type | 445/65R22.5 Foam Filled |

POWER SOURCE

| | |
|---------------------|----------------------------|
| Diesel Engine | Deutz F4L912 52 kW (70 hp) |
| Fuel Tank Capacity | 150 L (33 gal.) |
| Hydraulic Reservoir | 190 L (41 gal.) |
| Auxiliary Power | 12V-DC |

*Certain options or country standards will increase weight

PERFORMANCE FEATURES



Standard Features

Four-Wheel Drive
Pin-less Hydraulic Extendible Axles (Front & Rear)
0.91 x 2.44 m (36 x 96 in.) Platform
Slide Bar Gate
180 Degree Hydraulic Platform Rotator
3 Degree Tilt Alarm
Rim Protector Lug Tread Tyres
12V-DC Auxiliary Power
Proportional Controls
Lifting/Tie Down Lugs
Hourmeter
Spark Arresting Muffler
Dual Lifting Jacks (120SXJ)

Available Options

0.91 x 1.83 m (36 x 72 in.) Platform
Platform Work Lights
"Soft Touch" System 1.83 m (6 ft.)
Four-Wheel Steer
Head and Tail Lights
Travel Alarm
All Motion Alarm
Flashing Amber Beacon
Alarm Package ¹
Hostile Environment Kit ²
Dual Lifting Jacks (110SX and 110SXJ)

1. Flashing amber beacon and all motion alarm.
2. Includes boom wiper seals, cylinder bellows, and console cover.

Flexible Financing

JLG offers the best combination of leasing and financing alternatives, tailored to individual needs and with cost-competitive financial products that make your choice of JLG equipment easier. We can handle every aspect of the loan or lease, including flexible end-of-term options and disposition. And, because we understand the market and your needs, we provide efficient service to turn around your application quickly.

The JLG "1 & 5" Warranty

JLG Industries, Inc. backs our products with our exclusive "1 & 5" Warranty. We provide coverage on all products for one (1) full year, and cover all specified major structural components for five (5) full years. Due to continuous product improvements, we reserve the right to make specification and/or equipment changes without prior notification. This machine meets or exceeds applicable OSHA Regulations in 29 CFR 1910.67, 29 CFR 1926.453, and ANSI A92.5-1992 as originally manufactured for intended applications.

The JLG Promise

Whether you rent or own a JLG lift, you can expect the best in terms of safety, reliability, productivity and ease of use for the operator.



JLG Industries (Europe)
A Division of JLG Industries, Inc.
Kilmartin Place, Tannochside Park,
Uddingston, G71 5PH, Scotland
Tel: 01698 811005
Fax: 01698 811055
Internet: <http://www.jlg.com>
e-mail address: europe@jlg.com

